



1390 Broadway, Suite B #373  
 Placerville, CA 95667  
 (619) 247-8782  
 danielclar@me.com  
 danielclarauctioneers.com

FIRST CLASS MAIL

PRESORTED  
 FIRST-CLASS MAIL  
 U.S. POSTAGE PAID  
 ENCINITAS, CA  
 PERMIT #233

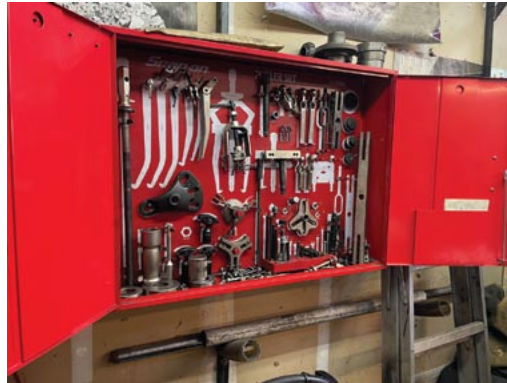
**Four Wheel Drive  
 Specialties** **ONLINE  
 ONLY  
 AUCTION**

On-Site Preview Sat. June 23, 10am-3pm  
 Location: 1820 Arnold Industrial Way, Concord, CA 94520  
 Auction begins **10am Tues. July 26, 2022**  
 Bidding closes starting at 10am on Thursday, July 28

Snap-On  
 rolling tool  
 chest on  
 chest



photos: Parker Hannifin punch press; Snap-On  
 puller set with cabinet; Heavy duty shop press;  
 Partial view Snap-On power tools;  
 Miller Millermatic 250 welder



**TERMS OF SALE:** A 15% buyer's premium will be added to all purchases. Cash, cashiers' checks, pre-approved company checks, VISA and Mastercard will be accepted as payment. Credit card payments will be charged a 3% processing fee. Full payment is due prior to removal and before announced check out deadline. All items are sold "as is" and "where is" with no warranties. Buyer is solely responsible for item removal. There is no cooling off period. Once the auction status states "sold", all sales are final and binding.

for information about sale  
 items, please call

**Daniel Clar**  
 (619)247-8782



Scan code for late entries to  
 this sale & future sale info



## Four Wheel Drive Specialties

On-Site Preview Sat. June 23, 10am-3pm  
Location: 1820 Arnold Industrial Way, Concord, CA 94520

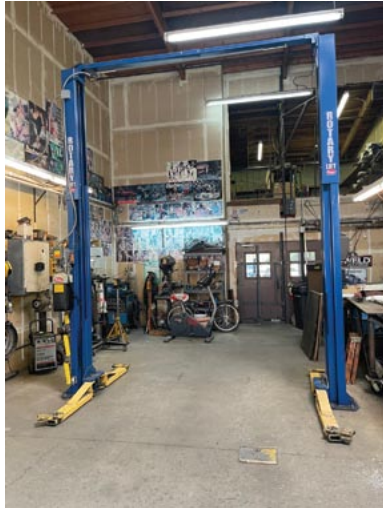
Auction begins **10am Tues. July 26, 2022**  
Bidding closes starting at 10am on Thursday, July 28

**ONLINE ONLY AUCTION**

Check-Out Dates: **Friday, July 29 through Sunday, July 31 from 10am - 4pm.**

15% Buyers premium added

Bidding via free App or  
[www.bid.danielclarauctioneers.com](http://www.bid.danielclarauctioneers.com)



*photos:* Rotary 9,000lb capacity twin post hoist; JET model 1236P shop lathe; Miller Syncrowave 250 ARC welder; Hypertherm Powermax 30 plasma cutter; Ammco model 4000 brake lathe; Partial view Snap-On hand tools; Port-a-cool cooling system; Branick model 7400 strut spring compressor



for information about sale items, please call  
**Daniel Clar (619)247-8782**

### **Metal Fabrication:**

JET model 1236P shop lathe  
Brobo cold saw  
Parker Hannifin punch press  
Heavy duty hydraulic shop press  
(2) Heavy duty pipe benders  
Miller Millermatic 250 welder  
Miller CP200 wire welder  
Miller Syncrowave 250 welder  
Miller wire welder with trolley  
Floor model shop press  
Pedestal mounted buffer/grinder  
Hypertherm Powermax 30 plasma cutter

### **Automotive Equipment:**

Rotary 9,000 Lb. capacity twin post hoist  
Ammco model 4000 brake lathe  
Branick model 7400 strut spring compressor  
Snap-On puller set with wall cabinet

### **General Shop and Hand Tools:**

Snap-On combination wrench sets  
Snap-On socket sets  
Snap-On impact socket sets  
Snap-On screwdriver sets  
Snap-On 18-volt and 14.4-volt cordless power tools  
Snap-On pneumatic power tools  
Snap-On and Blue Point thread repair kits  
Snap-On specialty plier sets

Snap-On ball joint service set

Snap-On hex key socket sets  
Snap-On large and specialty socket

### **Facility Equipment:**

Snap-On rolling tool chest on chest  
Heavy duty steel rolling work tables  
Clark propane forklift  
Kellogg 5-hp air compressor  
Assorted work stands  
Metal stock inventory  
Port-a-cool cooling system

***Much More, Please Preview!***